

PART OF S.E. 1/4 SEC. 31, T.7 N., R.1 W. S.L.B. & M.

147

FAIRWAY PARK NO. 3

LOTS 66-71, 85-95

IN HARRISVILLE CITY

SCALE 1" = 50'

TAXING UNIT: 79

PREFIX: 17-147

EXCEPT WHERE OTHERWISE SHOWN
ALL LOTS ARE OWNED BY:
FIRST INTERSTATE BANK OF UTAH N.A.

SEE PAGE 148

SEE PAGE 146

SEE PAGE 145

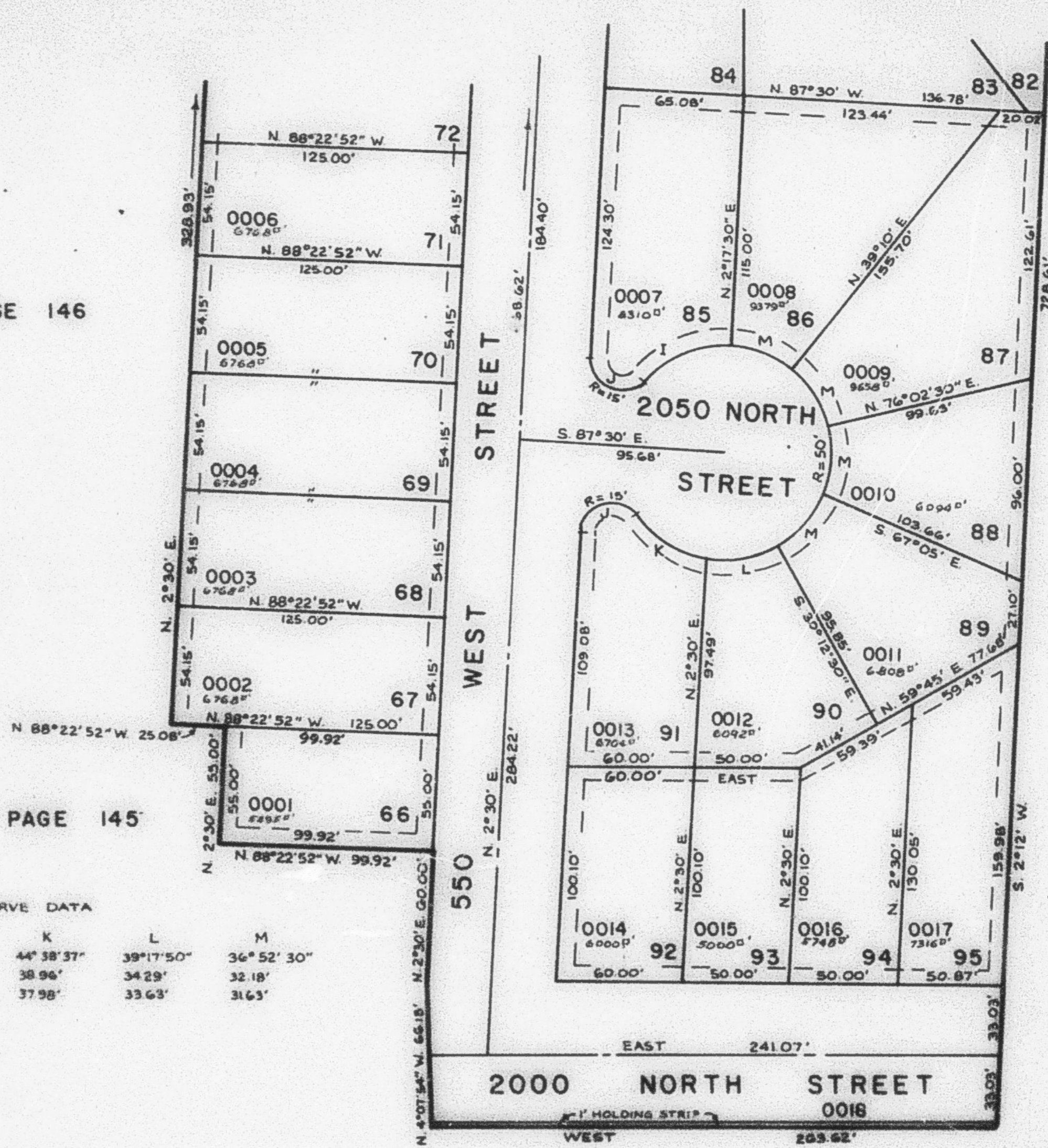
SEE PAGE 64

NOTE: 7' UTILITY AND DRAINAGE EASEMENTS
EACH SIDE OF PROPERTY AS INDICATED
BY DASHED LINES, UNLESS OTHERWISE
SHOWN.

FOR COMPLETE ENG. DATA SEE ORIG.
DED. PLAT BOOK 26, PAGE 52.

CURVE DATA

	I	J	K	L	M
Δ =	51°02'27"	41°13'56"	44°38'37"	39°17'50"	36°52'30"
L =	44.53'	36.97'	38.96'	34.29'	32.18'
LC =	43.07'	28.30'	37.98'	33.63'	31.63'



SEE PAGE 64